



TT-316AC – Class-leading towing for manufacturing and warehousing.

| | |
|----------------|------------------------|
| VOLTAGE | 36 volt |
| SPEED | 6 mph / 9.6 km/h |
| RANGE | 18 mi / 29 km |
| TURNING RADIUS | 74.5 in / 189 cm |
| TOW CAPACITY | 16,000 lb* / 7,250 kg* |



SAFETY

- Automatic braking on gas pedal release and automatic parking brake
- Reverse beeper
- Operator presence sensor
- High visibility LED headlight, combination tail lights
- Optional high visibility light bar and pedestrian light for increased visibility



PERFORMANCE/ RELIABILITY

- AC efficient motor
- Regenerative braking
- Powerful GT drive
- All steel construction
- Taylor-Dunn Quality



COMFORT

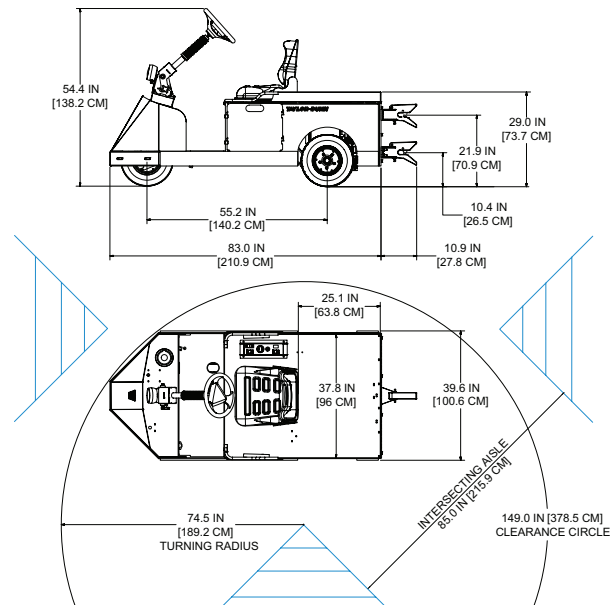
- Tilt/Telescoping Steering
- Front and rear suspension
- Premium semi-suspension seat
- Rear deck storage area
- Low 10.5 in (26 cm) step height

PERFORMANCE

| | |
|----------------------|------------------------|
| LOAD CAPACITY | 400 lb / 182 kg |
| TOW CAPACITY | 16,000 lb* / 7,257 kg* |
| DRAWBAR PULL | 320 lb / 1.42 kN |
| MAX SPEED (UNLOADED) | 6 mph / 9.6 km / h |
| TURNING RADIUS | 74.5 in / 189 cm |

DIMENSIONS

| | |
|-------------------|-----------------------------|
| OVERALL LENGTH | 83 in / 211 cm |
| OVERALL WIDTH | 39.5 in / 100 cm |
| OVERALL HEIGHT | 54 in / 138 cm |
| WHEEL BASE | 55 in / 140 cm |
| DECK SIZE (W x L) | 38 x 25 in / 96.5 x 63.5 cm |
| DECK HEIGHT | 29 in / 74 cm |



POWER SUPPLY / DRIVE TRAIN

| | |
|----------------|---|
| MOTOR | 7.5 HP AC |
| SYSTEM VOLTAGE | 36 Volt |
| DRIVE AXLE | GT Automotive Differential |
| BATTERY | Less Battery, SBX 175 Gray, 38W x 16L x 15H in (96W x 40L x 38H cm) |
| CHARGER | Less Charger |
| CONTROLLER | 450 Amp, 36 Volt, AC |

CHASSIS

| | |
|------------|--|
| FRAME | Fully Welded, Unitized, 10 Gauge |
| STEERING | Tilt/Telescoping Gear Steering |
| SUSPENSION | Front Coil Springs, Rear Leaf Springs |
| BRAKES | 3-Wheel Hydraulic Disc, Automatic/Electric Parking Brake |
| TIRES | 4.80 x 8, Load Range C, Pneumatic |

GENERAL

| | |
|-------------------|--|
| MAXIMUM OCCUPANCY | 1 / 250 lb (113 kg) |
| UNIT WEIGHT | 1,150 lb / 522 kg |
| SEAT | Single, Adjustable, Black Vinyl, with Spring Suspension, Electric Interlock Switch |
| INSTRUMENTATION | Smart View Display (Battery Status Indicator, Hour Meter, Fault Code Display) Forward/Reverse Selector, Key Switch, Electric Horn, Reverse Alarm, DC/DC Converter |
| LIGHT ACCESSORIES | LED Headlight, Taillight, Brake Light, Optional Light Bar with Reverse, Strobe and Brake Light |
| HITCH | Automatic Coupling |
| CONFORMANCE | Type E OSHA 1910.178, ANSI B56.9 |

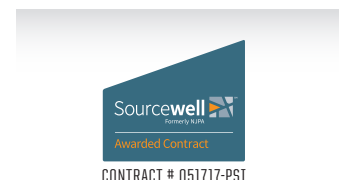
OPTIONS

- Light bar
- Portable charger
- Blue pedestrian light
- Non-marking tires
- Roll-out or slide-out battery box
- Beacon or strobe light
- Automatic hitch w/ hand release
- Soft solid tires
- Various hitches
- Custom paint color
- Rubber bumper

WARRANTY



PROCUREMENT



* Based on Standard Configuration. Actual towing capacity is dependent on application, vehicle configuration, ballast weight, and operating environment. Note: Photos are shown with optional features. † Specifications, standard equipment, accessories and modifications are all subject to change without notice. Taylor-Dunn vehicles can be hazardous to operate and are not intended for on-road use. All riders should always wear safety protection as required for their jobsite and appropriate for operating conditions and intended usage, considering factors such as intended speed, unevenness of terrain, turns in path, vehicle traffic and other obstacles. Never engage in stunt driving, and avoid excessive speeds and sharp turns. Riding and alcohol/drugs don't mix. ©2019 Polaris Industries Inc.